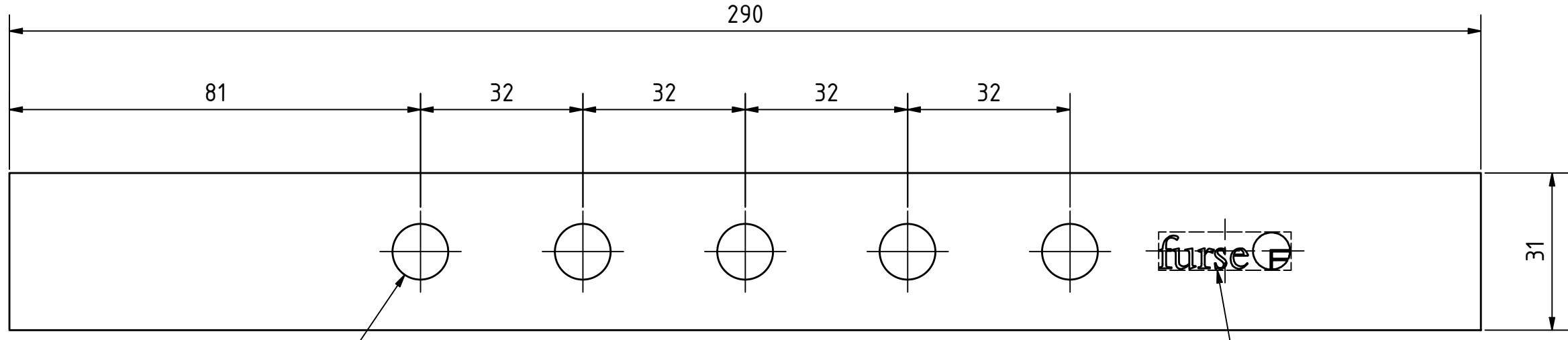


This drawing and the information contained herein is the property of ABB Ltd. and shall not be copied, traced, photographed or reproduced in any manner nor used for any purpose whatsoever, except by written permission of ABB Ltd. This drawing shall be returned to ABB Ltd. upon request. Copyright 2015, ABB Ltd. All rights reserved.

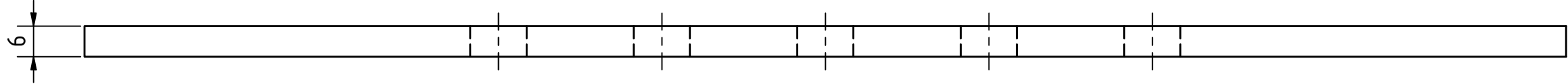
VARIANT PART NUMBERS				
VARIANT	PART NO.	GID Number	Description	FINISH
1	PT006	7TCA083340R0015	EARTH BAR TO SUIT CONCRETE PIT. 5 HOLE, COPPER, STRAIGHT.	SELF COLOUR
2	PT006T	7TCA083340R0016	EARTH BAR TO SUIT CONCRETE PIT. 5 HOLE, TIN PLATED COPPER, STRAIGHT.	ELECTROPLATED TIN 4 - 8 MICRON.



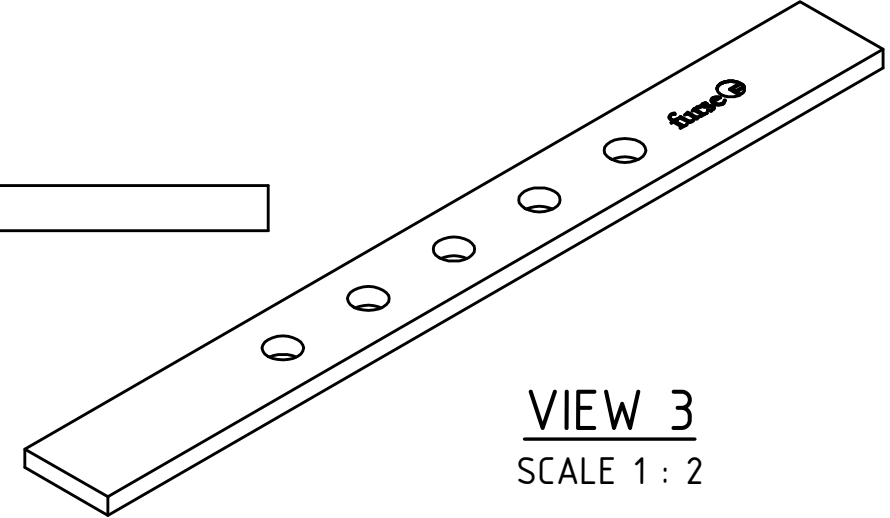
Ø11 THRU 5x

VIEW 1
SCALE 1 : 1

STAMPED FURSE LOGO.



VIEW 2
SCALE 1 : 1



VIEW 3
SCALE 1 : 2

GID NO.:	SEE TABLE	PART NO.:	SEE TABLE
----------	-----------	-----------	-----------

UNITS IN MILLIMETRES. TOLERANCES UNLESS OTHERWISE STATED: X = ±0.5 ANG. = ±1° X.X = ±0.2 X.XX = ±0.1 FIRST ANGLE PROJECTION	ISSUED FOR:		ABB Ltd. Wilford Road, Nottingham, NG2 1EB United Kingdom 												
	INFORMATION														
	PRODUCT LINE: FURSE - ELP	MATERIAL: HARD DRAWN BAR TO BS EN 13601 - CW004A (Cu-ETP)	TITLE: EARTH BAR TO SUIT CONCRETE PIT. 5 HOLE, COPPER, STRAIGHT.												
	FINISH: SEE VARIANT PARTS NUMBERS TABLE.		DRAWING NUMBER: PT006 CD 01 REV: A												
1. DO NOT SCALE 2. ALL DIMENSIONS SHOWN ARE BEFORE STATED FINISH. 3. REMOVE ALL BURRS AND SHARP EDGES.	<table border="1"> <thead> <tr> <th>ORIGINAL</th> <th>DATE</th> <th>NAME</th> </tr> </thead> <tbody> <tr> <td>DRAWN</td> <td>14/08/2020</td> <td>A. MERRILL</td> </tr> <tr> <td>CHECK'D</td> <td>14/08/2020</td> <td>J. MATTHEWS</td> </tr> <tr> <td>APPR'D</td> <td>14/08/2020</td> <td>M. BUCK</td> </tr> </tbody> </table>	ORIGINAL	DATE	NAME	DRAWN	14/08/2020	A. MERRILL	CHECK'D	14/08/2020	J. MATTHEWS	APPR'D	14/08/2020	M. BUCK		
ORIGINAL	DATE	NAME													
DRAWN	14/08/2020	A. MERRILL													
CHECK'D	14/08/2020	J. MATTHEWS													
APPR'D	14/08/2020	M. BUCK													